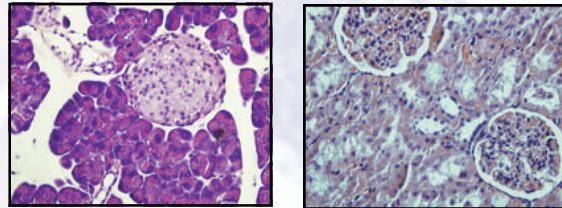
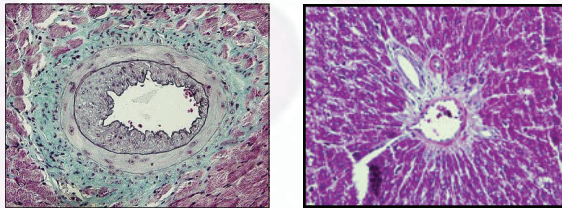
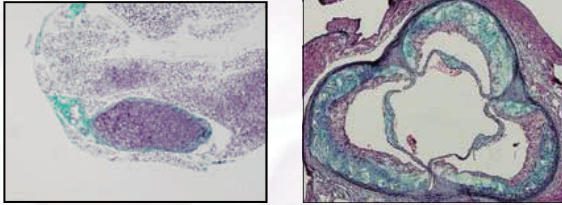


Image Gallery



Tips

- **Fast tissue collection improves histology results.**
- **24 hour Formaline fixation is critical for tissue preservation.**
- **Quick process can prevent tissue shattering, better sectioning and high-quality morphology.**

Partners

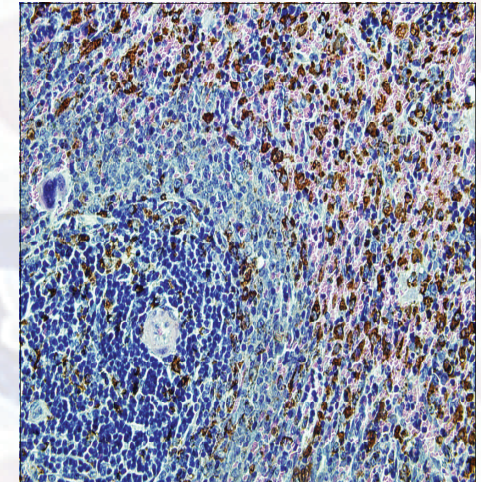


Contact Information

Pathology Research Laboratory
Histology Services
R-2028
St. Boniface Research Centre
351 Tache Avenue
Winnipeg, MB
R2H 2A6

Phone: 204-235-3954
Fax: 204-237-4018
E-mail: pathologyservices@sbrc.ca

Pathology Research Laboratory



Count on us for all your histology

- Fast turnaround
- High quality
- Friendly service
- Competitive prices

Tel: 204-235-3954

Pathology Research Laboratory

Pathology Research Laboratory

Pathology Research Laboratory

Pathology Research Laboratory

Driven by Science, Performed with Passion

Driven by Science, Performed with Passion

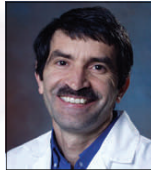
Driven by Science, Performed with Passion

Our Team

Laboratory Director

Dr. M. Moghadasian, DVM, MSc, (Pharmacology)
PhD (Pathology)

- Experimental Pathologist
- Veterinary Medicine
- Toxicological study
- Pharmaceutical/Nutraceutical studies



Consultant Board-certified Pathologist

Dr. G. Fischer, MD, FRCFC, PhD

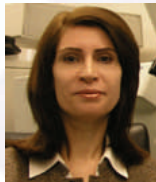
- Board Certified in:
 - Cytology
 - Oncology
 - Anatomy



Consultant Pathologist

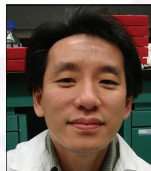
Fatemeh Askarian, MD

- Research Pathologist Specializing in:
 - Cytology
 - Oncology
 - Cardiovascular Pathology



Senior Technologist

Khuong Le



Routine Services

◆ Complete Basic Services \$47.00 will cover:

- Tissue Processing
- Paraffin Embedding
- 5µm Sectioning
- H&E Staining

Special Services

- ◆ Hematology
- ◆ Frozen Sectioning
- ◆ Special Staining
 - Tri-Chrome
 - Penta-Chrome
 - Calcium
 - Iron
 - ORO
 - Others
- ◆ Immunohistochemistry
- ◆ Protocol Development
- ◆ Morphometrical Analysis
- ◆ Professional Consultation
- ◆ Written Reports

Selected Publications

Moghadasian MH, Nguyen LB, Shefer S, McManus BM, Frohlich JJ. Histologic, hematologic and biochemical characterization of apo E-knockout mice: Effects of Dietary cholesterol and phytosterols. *Lab Invest* 1999;79:355-364

Othman R, Suh M, **Fischer G**, Azordegan N, Riediger N, **Le K**, Jassal D, **Moghadasian MH**. A comparison of the effects of fish oil and flaxseed oil on post-transplant complication in an allograft cardiac model in rats. *Am J Physiol* 2008;294:H1452-1458

Moghadasian MH et al. Pathophysiology of apolipoprotein E deficiency in mice: relevance to apo E-related disorders in humans. *FASEB J*. 2001;15:2623-30

Azordegan N, Yazdankhah A, **Moghadasian MH**. A rare case of coexistence of carcinoid tumor of the appendix and ileal endometriosis. *Arch Gynecol Obst* 2008;May 10th (epub ahead of print)

Testimonials

Dr Moghadasian runs a first class histology service for those in the Centre that is second to none. As a trained pathologist, he has helped us with several publications when histological analysis was needed. Grant Pierce, Executive Director, St. Boniface Hospital Research Centre

I would highly recommend the histology services by Dr. Moghadasian. Results were high quality and any questions we had regarding methodology and interpretation of findings were quickly answered. David Ma, Assistant Professor, University of Guelph

Research expertise provided by Dr. Moghadasian's group on light microscopy and morphometrical examinations has been instrumental to our project in defining nutraceutical benefits of vegetable oils. Jitao Zou, Senior Research Officer, Plant Biotechnology institute, National Research Council Canada